



▶ Medium Duty: Longspan Racking System

MYSTAR LONGSPAN 500 (LS500) SYSTEM with ergonomic profiles are designed for medium-duty warehouse applications yet in a not bulky appearance. With profile design & capabilities that proves to be stronger than Boltless System and almost similar as Pallet Racking System, the system can either be used as Storage Rack or Mezzanine System.

The LS500 system is suitable for industries/businesses that fall into following characteristics:

- **Hand-Loaded Storage**

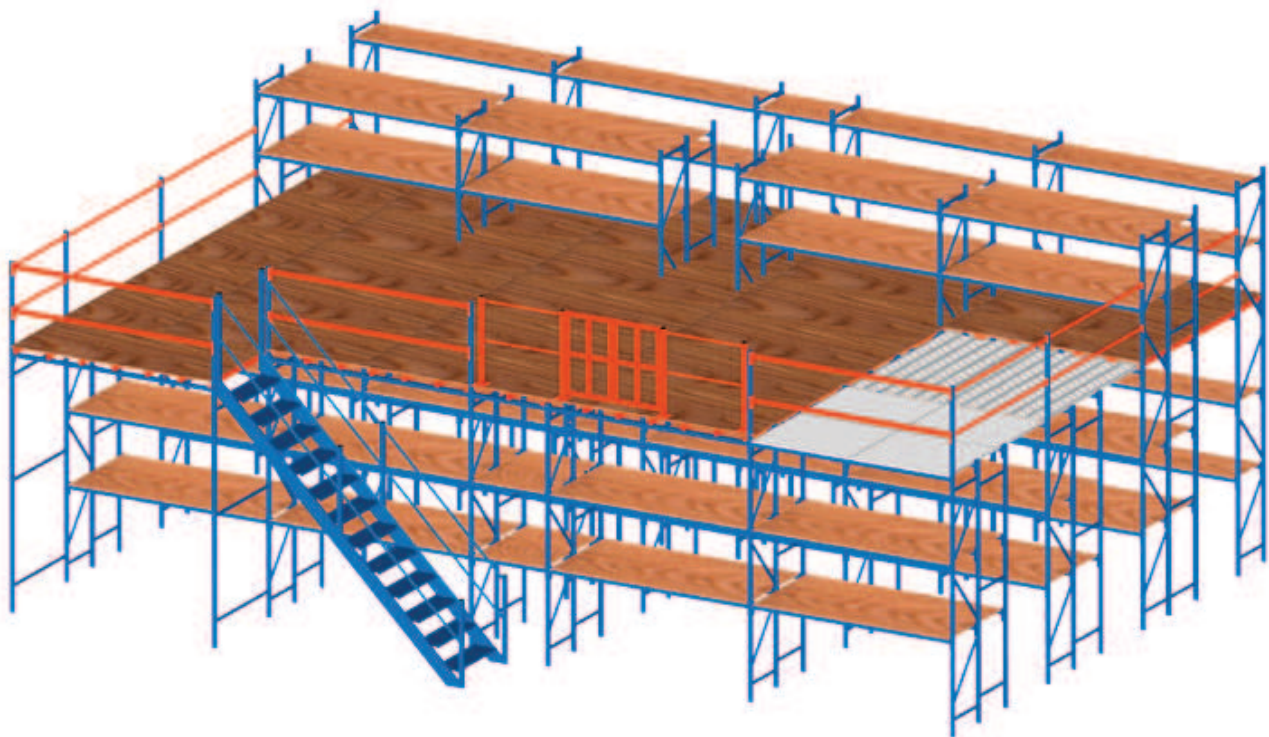
The LS500 system is intended for hand loaded storage method, whereby products stored are placed onto the beams or shelves and picked from them manually.

- **Medium-Duty Storage**

For storing of products' weight NOT MORE THAN 1,000kgs.

- **Storage & Display Equipment**

The LS500 system can be designed and used as storage/display equipments for retail industries.



▲ Timber Shelf Decking



▲ Steel Shelf Decking





▶ Medium Duty: **Longspan Racking System** An Open Type LS500 Racking System



▶▶ An enclosed type, side & back, LS500 Racking System with Shelf Divider at each level.





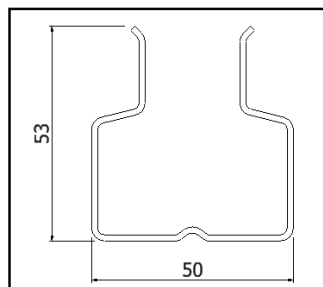
► Medium Duty: Major Components of Longspan Racking System

Basic Technical Data

UPRIGHT & BRACING, cold roll-formed C-section profile with return flange and centre reinforcement ribs to ensure the strength and rigidity. The Lug holes at 50mm pitch allow beams to be adjusted at smaller increments.



LS500 Upright



LS500 Upright Sketch

PROFILE	DIMENSIONS
UPRIGHT	50mm(W) x 52mm(D)
BRACING	34mm(W) x 24.5mm(D)

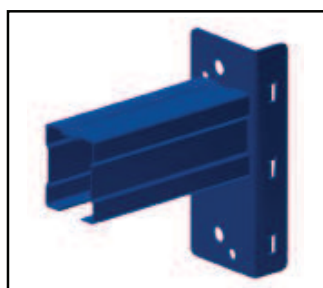


LS500 Base Plate

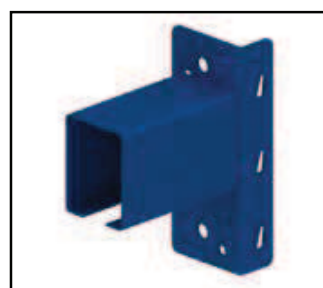


Frame Bracing

BEAMS, are welded to 3-Lug End Connectors for the Open Beam to ease in hooking onto the uprights.



Open Beam 55mm (H) x 45mm (D)



Open Beam 80mm (H) x 50mm (D)

PROFILE	DIMENSIONS
OPEN BEAM	55mm(H) x 45mm(D)
	65mm(H) x 45mm(D)
	80mm(H) x 50mm(D)
Z-BEAM	50mm(H) x 38mm(D)



Z-Beam 50mm (H) x 38mm (D)