

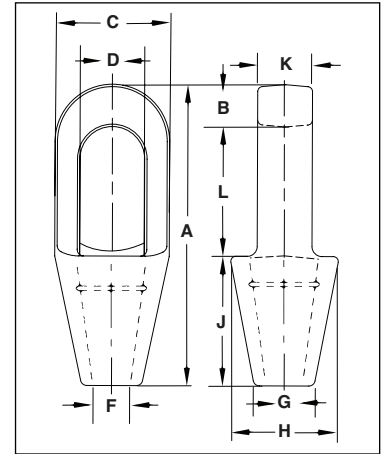
# Closed Spelter Sockets



**G-417 / S-417**

Closed Grooved Sockets meet the performance requirements of Federal Specification RR-S-550E, Type A, except for those provisions required of the contractor. For additional information, see page 452.

- Forged Steel Sockets through 38mm, cast alloy steel 40mm through 102mm.
- Spelter socket terminations have an efficiency rating of 100%, based on the catalog strength of wire rope.
- Ratings are based on recommended use with 6 x 7, 6 x 19, or 6 x 37, IPS or XIP (EIP), XXIP (EEIP), RRL, FC, or IWRC wire rope.
- Strand constructed with minimal number of wires (e.g. 1 x 7) requires special consideration that socket basket length be five (5) times the strand diameter or fifty (50) times the wire diameter, whichever is the greater.



**NOTICE: All cast steel sockets 40mm and larger are magnetic particle inspected and ultrasonic inspected. Proof testing available on special order.**  
 Drawing illustrates one groove used on sockets 6mm through 18mm. Sizes 20mm through 38mm use 2 grooves. Sizes 40mm and larger use 3 grooves.

## G-417 / S-417 Closed Spelter Sockets

| Rope Dia.  |                 | Structural Strand Dia. (mm) | Ultimate Load (t) | Stock No.   |            | Weight Each (kg) | Dimensions (mm) |      |      |      |      |      |      |      |      |      |
|------------|-----------------|-----------------------------|-------------------|-------------|------------|------------------|-----------------|------|------|------|------|------|------|------|------|------|
| (mm)       | (in.)           |                             |                   | G-417 Galv. | S-417 S.C. |                  | A               | B    | C    | D*   | F    | G    | H    | J    | K    | L    |
| 6-7        | 1/4             | -                           | 4.50              | 1039897     | 1039904    | .23              | 116             | 12.7 | 39.6 | 22.4 | 9.65 | 17.5 | 39.6 | 57.2 | 12.7 | 46.0 |
| 8-10       | 5/16 - 3/8      | -                           | 12.0              | 1039913     | 1039922    | .34              | 125             | 15.8 | 42.9 | 24.6 | 12.7 | 20.6 | 42.9 | 57.2 | 17.5 | 52.3 |
| 11-13      | 7/16 - 1/2      | -                           | 20.0              | 1039931     | 1039940    | .68              | 140             | 17.5 | 51.0 | 29.5 | 14.2 | 23.9 | 51.0 | 63.5 | 22.4 | 58.7 |
| 14-16      | 9/16 - 5/8      | 12-13                       | 30.8              | 1039959     | 1039968    | 1.13             | 162             | 20.6 | 67.0 | 35.8 | 17.5 | 30.2 | 67.0 | 76.2 | 25.4 | 65.0 |
| 18         | 3/4             | 14-16                       | 43.5              | 1039977     | 1039986    | 1.92             | 194             | 26.9 | 76.2 | 42.2 | 22.4 | 33.3 | 70.0 | 89.0 | 31.8 | 77.7 |
| 20-22      | 7/8             | 18-19                       | 65.3              | 1039995     | 1040000    | 3.28             | 226             | 33.3 | 92.0 | 49.3 | 25.4 | 38.1 | 82.5 | 102  | 38.1 | 90.5 |
| 24-26      | 1               | 20-22                       | 81.6              | 1040019     | 1040028    | 4.76             | 254             | 36.6 | 105  | 58.5 | 28.7 | 44.5 | 95.5 | 114  | 44.5 | 103  |
| 28-30      | 1-1/8           | 24-26                       | 100               | 1040037     | 1040046    | 6.46             | 283             | 39.6 | 114  | 65.0 | 31.8 | 51.0 | 105  | 127  | 51.0 | 116  |
| 32-35      | 1-1/4 - 1-3/8   | 28                          | 136               | 1040055     | 1040064    | 8.95             | 309             | 41.4 | 127  | 71.0 | 38.1 | 58.5 | 119  | 138  | 56.5 | 129  |
| 38         | 1-1/2           | 30-32                       | 170               | 1040073     | 1040082    | 13.24            | 355             | 49.3 | 137  | 81.0 | 41.4 | 70.5 | 132  | 151  | 62.5 | 155  |
| † 40-42    | † 1-5/8         | 33-35                       | 188               | 1040091     | 1040108    | 16.32            | 390             | 54.0 | 146  | 82.5 | 44.5 | 76.2 | 140  | 165  | 70.0 | 171  |
| † 44-48    | † 1-3/4 - 1-7/8 | 36-40                       | 268               | 1040117     | 1040126    | 25.96            | 445             | 55.5 | 171  | 95.5 | 51.0 | 79.5 | 162  | 191  | 76.2 | 198  |
| † 50-54    | † 2 - 2-1/8     | 42-45                       | 309               | 1040135     | 1040144    | 35.83            | 505             | 62.0 | 194  | 111  | 57.2 | 95.5 | 187  | 216  | 82.5 | 224  |
| † 56-60    | † 2-1/4 - 2-3/8 | 46-48                       | 360               | 1040153     | 1040162    | 47.62            | 546             | 70.0 | 216  | 127  | 66.8 | 105  | 210  | 229  | 92.0 | 248  |
| † 64-67    | † 2-1/2 - 2-5/8 | 50-54                       | 424               | 1041759     | 1041768    | 63.50            | 597             | 79.5 | 241  | 140  | 74.5 | 114  | 235  | 248  | 102  | 270  |
| † 70-73    | † 2-3/4 - 2-7/8 | 56-62                       | 549               | 1041777     | 1041786    | 99.79            | 645             | 79.5 | 273  | 159  | 79.5 | 124  | 259  | 279  | 124  | 286  |
| † 75-80    | † 3 - 3-1/8     | 64-67                       | 656               | 1041795     | 1041802    | 125              | 689             | 85.6 | 292  | 171  | 86.0 | 133  | 292  | 305  | 133  | 298  |
| † 82-86    | † 3-1/4 - 3-3/8 | 70-73                       | 750               | 1041811     | 1041820    | 142              | 743             | 102  | 311  | 184  | 92.0 | 146  | 311  | 330  | 146  | 311  |
| † 88-92    | † 3-1/2 - 3-5/8 | 76-80                       | 820               | 1041839     | 1041848    | 181              | 787             | 102  | 330  | 197  | 98.5 | 160  | 330  | 356  | 159  | 330  |
| † 94 - 102 | † 3-3/4 - 4     | -                           | 1005              | 1041857     | 1041866    | 246              | 845             | 108  | 362  | 216  | 108  | 184  | 362  | 381  | 178  | 356  |

\* Diameter of pin must not exceed pin used on companion 416 socket. Reference adjacent page "D" dimension. † Cast Alloy Steel.